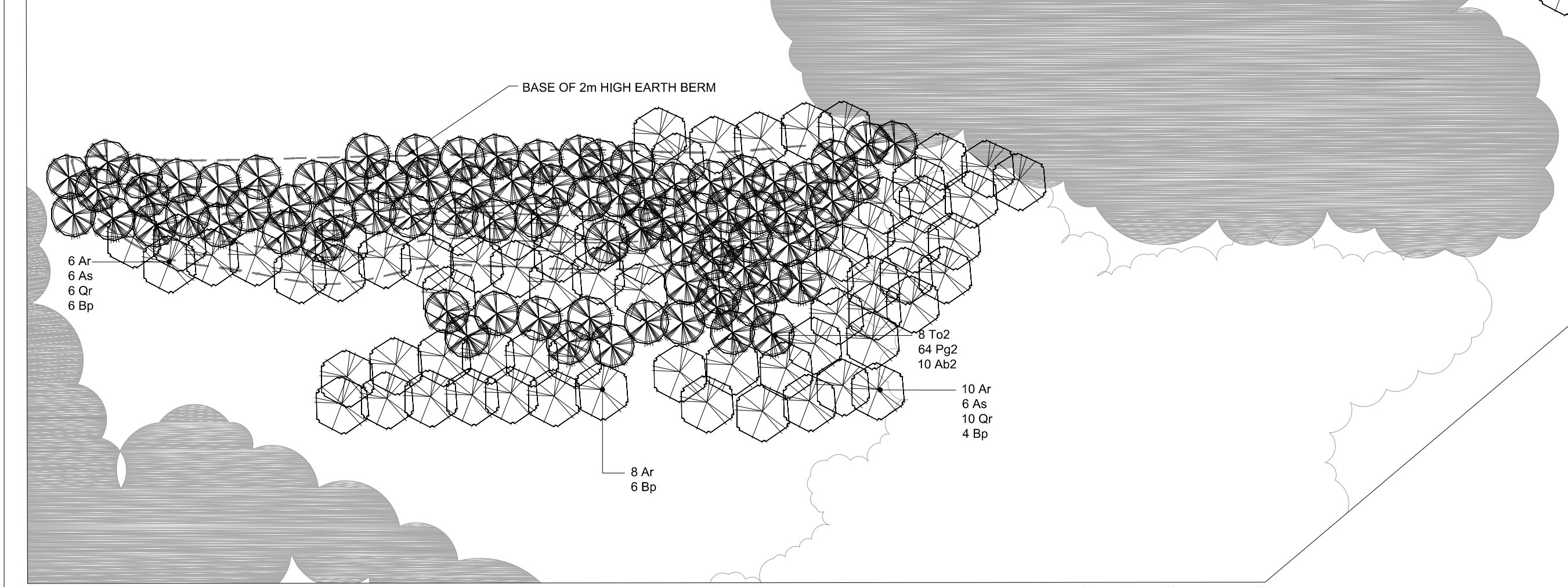


ZONE 3a1 - WEST EDGE VISUAL SCREEN PLANTING

PLANT LIST - ZONE 3a LANDSCAPE

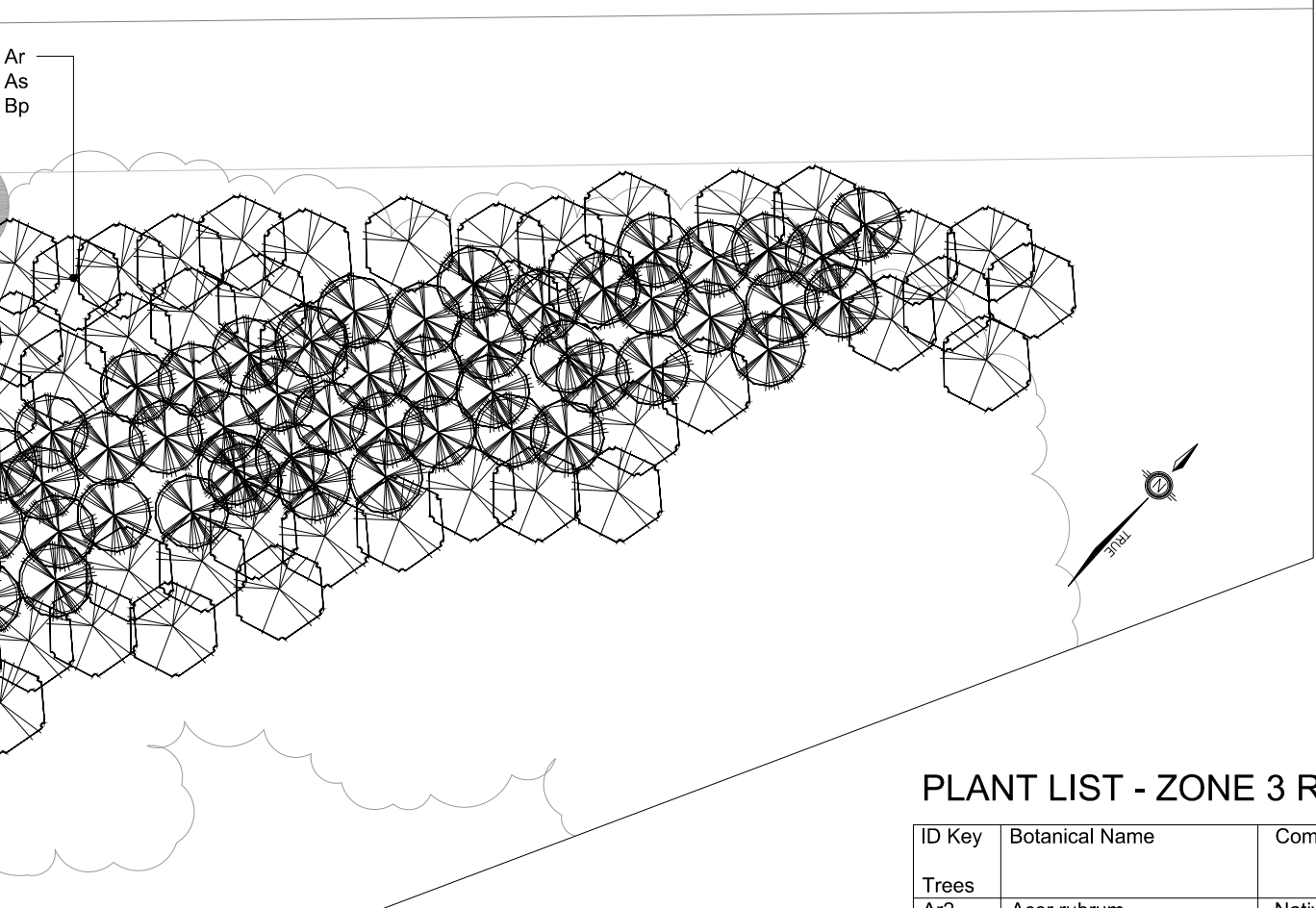
ID Key	Botanical Name	Common Name	Size	Qty.	Remarks
Trees					
Ab	Abies balsamea	Balsam Fir	1.2m Ht., WB	66	Straight trunk, full, well branched, bushy symmetrical form
Ar	Acer rubrum	Native Red Maple	250cm Ht., BB	80	Straight trunk, well developed side branching, symmetrical form
As	Acer saccharum	Sugar Maple	250cm Ht., BB	60	Straight trunk, well developed side branching, symmetrical form
Bp	Betula papyrifera	White Birch	250cm Ht., BB	23	3 stem clump, straight trunk, well developed side branching
Pg	Picea glauca	White Spruce	1.2m Ht., WB	120	Straight trunk, full, well branched, bushy symmetrical form
Ps	Pinus strobus	Eastern White Pine	1.2m Ht., WB	50	Straight trunk, full, well branched, bushy symmetrical form
Qr	Quercus rubra	Red Oak	250cm Ht., BB	45	Straight trunk, well developed side branching, symmetrical form
To	Thuja occidentalis	Eastern White Cedar	1.2m Ht., BB	89	Swamp cedar, well developed side branching, symmetrical form
Note: Deciduous tree trunk size to be 40mm Cal. min. (field grown stock)					
Shrubs					
Ac	Amelanchier canadensis	Downy Serviceberry	1.0m Ht., Potted	32	Well branched, bushy form, min. 5 canes
Sc	Sambucus canadensis	Elderberry	1.0m Ht., Potted	56	Well branched, bushy form, min. 7 canes
Pv	Prunus virginiana	Choke ChERRY	1.0m Ht., Potted	26	Well branched, bushy form, min. 5 canes
Rt	Rhus typhina	Staghorn Sumac	1.0m Ht., Potted	32	Well branched, bushy form, min. 5 canes
VI	Viburnum lentago	Nannyberry	1.0m Ht., Potted	34	Well branched, bushy form, min. 5 canes



ZONE 3b - NORTHWEST VISUAL SCREEN PLANTING

PLANT LIST - ZONE 3b LANDSCAPE

ID Key	Botanical Name	Common Name	Size	Qty.	Remarks
Trees					
Ab	Abies balsamea	Balsam Fir	1.2m Ht., WB	20	Straight trunk, full, well branched, bushy symmetrical form
AB2	Abies balsamea	Balsam Fir	1.8m Ht., WB	10	Straight trunk, full, well branched, bushy symmetrical form
Ar	Acer rubrum	Native Red Maple	250cm Ht., BB	24	Straight trunk, well developed side branching, symmetrical form
As	Acer saccharum	Sugar Maple	250cm Ht., BB	12	Straight trunk, well developed side branching, symmetrical form
Bp	Betula papyrifera	White Birch	250cm Ht., BB	16	3 stem clump, straight trunk, well developed side branching
Pg	Picea glauca	White Spruce	1.2m Ht., WB	30	Straight trunk, full, well branched, bushy symmetrical form
Pg2	Picea glauca	White Spruce	1.8m Ht., WB	64	Straight trunk, full, well branched, bushy symmetrical form
Qr	Quercus rubra	Red Oak	250cm Ht., BB	16	Straight trunk, well developed side branching, symmetrical form
To	Thuja occidentalis	Eastern White Cedar	1.2m Ht., BB	14	Swamp cedar, well developed side branching, symmetrical form
To2	Thuja occidentalis	Eastern White Cedar	1.8m Ht., BB	8	Swamp cedar, well developed side branching, symmetrical form
Note: Deciduous tree trunk size to be 40mm Cal. min. (field grown stock)					



ZONE 3a2 - REFORESTATION PLANTING

PLANT LIST - ZONE 3 REFORESTATION AREA

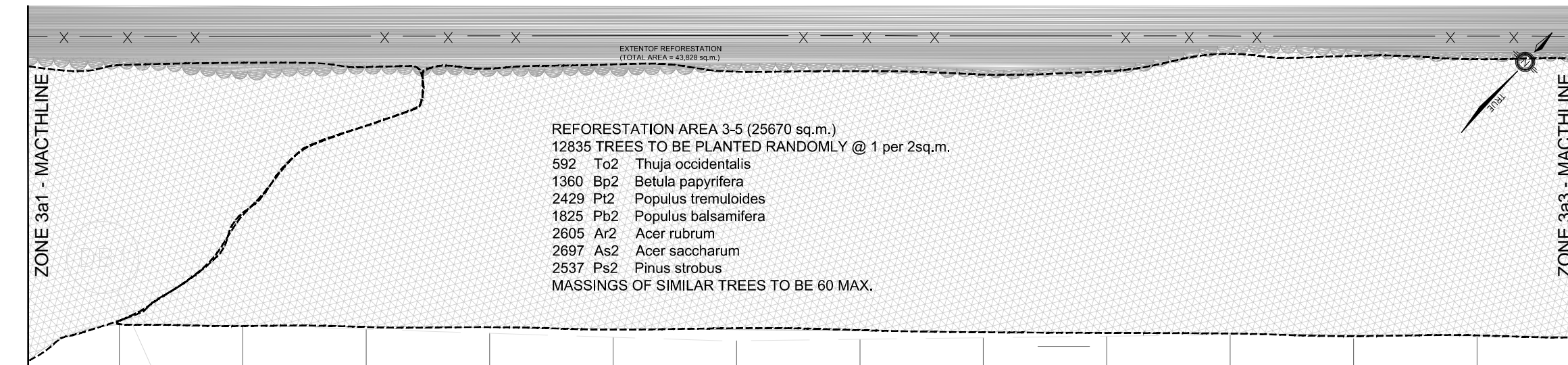
ID Key	Botanical Name	Common Name	Size	Qty.	Remarks
Trees					
Ar2	Acer rubrum	Native Red Maple	300mm Ht., BR	3395	Seeding, Planted 2.0m O/C
As2	Acer saccharum	Sugar Maple	300mm Ht., BR	3395	Seeding, Planted 2.0m O/C
Bp2	Betula papyrifera	White Birch	300mm Ht., BR	3395	Seeding, Planted 2.0m O/C
Ps2	Pinus strobus	Eastern White Pine	300mm Ht., BR	3395	Seeding, Planted 2.0m O/C
Pb2	Populus balsamifera	Balsam Poplar	300mm Ht., BR	3395	Seeding, Planted 2.0m O/C
Pt2	Populus tremuloides	Trembling Aspen	300mm Ht., BR	3395	Seeding, Planted 2.0m O/C
To2	Thuja occidentalis	Eastern White Cedar	300mm Ht., BR	3395	Seeding, Planted 2.0m O/C

- Growing medium for reforestation area to be conditioned with organic matter and topsoil. Ground is to be tilled to mitigate compaction. Prepared soil is to be a minimum depth of 200mm.
- Surface after planting is to receive an application of approved cover crop seed mixture broadcasted.
- Reforestation area is to be covered with 75mm of wood mulch (product of chipping existing vegetation removed)

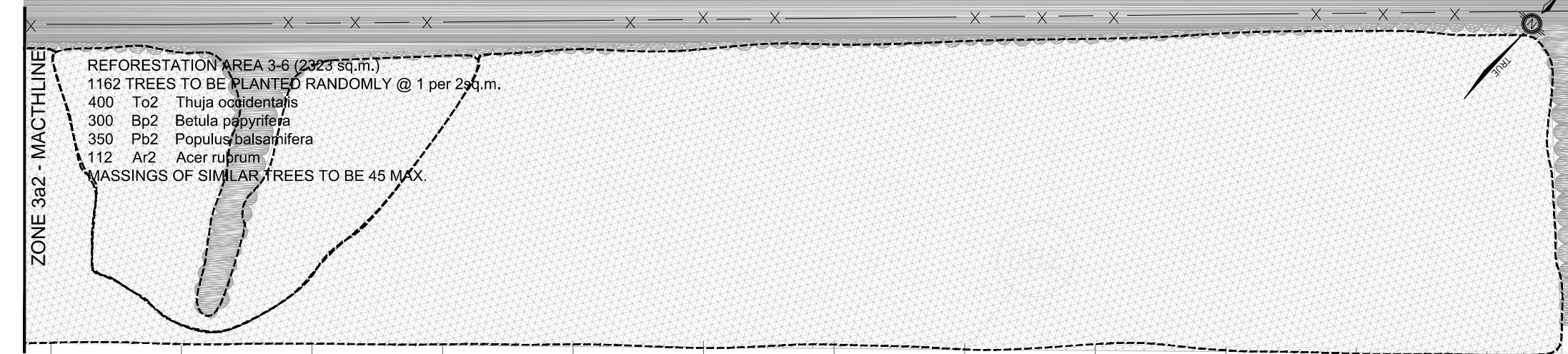
SEED MIXTURE - Cover Crop for Reforestation Area

Botanical Name	Common Name
Lolium multiflorum	Annual Rye Grass

Seeding Rate: 22 kg/hectare (20 lbs/acre)



ZONE 3a3 - REFORESTATION PLANTING



ZONE 3a4 - REFORESTATION PLANTING

PROJECT
West Carleton Environmental Centre
Site Plan Approval
Landscape Development

2349 to 2432 Carp Road
Ottawa, ON

CLIENT
WASTE MANAGEMENT
2301 Carp Road
Ottawa ON K0A 0Z8
www.WMCanada.com

CONSULTANT
AECOM Canada Ltd.
302-1150 Morrison Drive
Ottawa, ON
613.820.8282 tel 613.820.8338 fax
www.aecom.com

- EXISTING VEGETATION TO BE PROTECTED AND MAINTAINED
- PROPOSED NATIVE PLANTINGS IN NATURAL ARRANGEMENTS
- REFORESTATION AREA
- EARTH BERM

- REVISION DATE**
- RE-ISSUED FOR SPA SUBMISSION 21/07/15
 - RE-ISSUED FOR SPA SUBMISSION 10/08/15
 - RE-ISSUED FOR SPA SUBMISSION 09/09/15
 - RE-ISSUED FOR SPA SUBMISSION 28/09/15

APPROVED **REFUSED**
THIS DAY OF _____, 20____
DERRICK MOODIE, MANAGER
DEVELOPMENT REVIEW, RURAL SERVICES

PROJECT NUMBER
60430948

DRAWING TITLE
West End Visual Screening -
Zone 3

DRAWING DATE
February 2015
DRAWN BY:
A. BECKING
SCALE:
AS SHOWN

L6